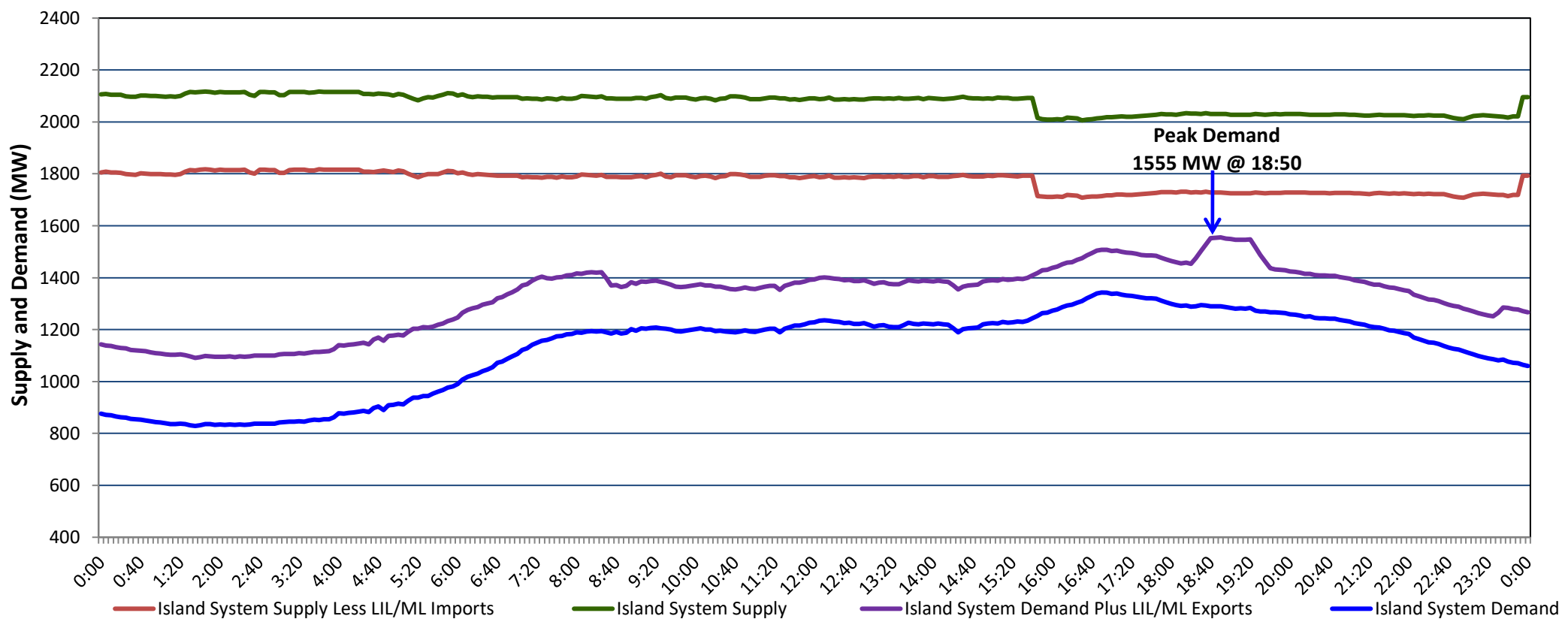


Newfoundland Labrador Hydro (NLH) Supply and Demand Status Report Filed Tuesday, November 22, 2022

Section 1 Island Interconnected System Supply, Demand & Exports Actual 24 Hour System Performance For Monday, November 21, 2022



Supply Notes For November 21, 2022 ^{1,2}

- A As of 0806 hours, November 10, 2022, St. Anthony Diesel Plant available at 8.7 MW (9.7 MW).
- B At 1545 hours, November 21, 2022, Holyrood Unit 1 unavailable 80 MW (170 MW).
- C At 2350 hours, November 21, 2022, Holyrood Unit 3 returned to service at 75 MW (150 MW).

Section 2 Island Interconnected Supply and Demand

Tue, Nov 22, 2022	Island System Outlook ³		Seven-Day Forecast	Temperature (°C)		Island System Daily Peak Demand (MW)	
				Morning	Evening	Forecast	Adjusted ⁷
Available Island System Supply: ⁵	2,075	MW	Tuesday, November 22, 2022	-1	1	1,530	1,432
NLH Island Generation: ^{4,8}	1,445	MW	Wednesday, November 23, 2022	-2	1	1,265	1,170
NLH Island Power Purchases: ⁶	110	MW	Thursday, November 24, 2022	-5	-4	1,410	1,314
Other Island Generation:	220	MW	Friday, November 25, 2022	2	0	1,195	1,101
ML/LIL Imports:	300	MW	Saturday, November 26, 2022	2	1	1,160	1,067
Current St. John's Temperature & Windchill:	-2 °C	-7 °C	Sunday, November 27, 2022	-2	-1	1,265	1,170
7-Day Island Peak Demand Forecast:	1,530	MW	Monday, November 28, 2022	9	4	1,210	1,116

Supply Notes For November 22, 2022 ³

- Notes:
1. Generation outages for running and corrective maintenance are included. These are not unusual for power system operations. They generally do not impact customer supply. The power system operators schedule outages to system equipment whenever possible to coincide with periods when customer demands are low and sufficient supply reserves are available. However, from time to time equipment outages are necessary and reserves may be impacted.
 2. Due to the Island system having no synchronous connections to the larger North American grid, when there is a sudden loss of large generating units there may be a requirement for some customer's load to be interrupted for short periods to bring generation output equal to customer demand. This automatic action of power system protection, referred to as under frequency load shedding (UFLS), is necessary to ensure the integrity and reliability of system equipment. Under frequency events have typically occurred 5 to 8 times per year on the Island Interconnected System and the resultant customer load interruptions are generally less than 30 minutes. With the activation of the Maritime Link frequency controller during the winter of 2018, UFLS events have occurred less frequently.
 3. As of 0800 Hours.
 4. Gross output including station service at Holyrood (24.5 MW) and improved NLH hydraulic output due to water levels (35 MW).
 5. Gross output from all Island sources (including Note 4).
 6. NLH Island Power Purchases include: CBPP Co-Gen, Nalcor Exploits, Rattle Brook, Star Lake, Wind Generation and capacity assistance (when applicable).
 7. Adjusted for curtailable load, market activities and the impact of voltage reduction when applicable.
 8. Due to limitations inherent in the design of combustion turbines, the output of combustion turbines may be reduced in the event that ambient temperatures exceed the threshold

Section 3 Island Peak Demand Information Previous Day Actual Peak and Current Day Forecast Peak

Mon, Nov 21, 2022	Actual Island Peak Demand ⁹	18:50	1,555 MW
Tue, Nov 22, 2022	Forecast Island Peak Demand		1,530 MW

- Notes: 9. Island Demand / LIL / ML Exports (where applicable) is supplied by NLH generation and purchases, plus generation owned and operated by Newfoundland Power and Corner Brook Pulp & Paper (Deer Lake Power, DLP).